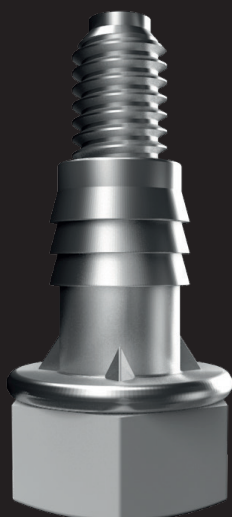


DISCOVER MORE



SCOPRI DI PIÙ

REGISTERED  
DESIGN



# PR6820

A ring that makes the difference

## ADJUSTABLE LEG WITH INSERT AND CAP

Every detail, even the smallest one, can make the difference. For this reason, we have redesigned the Adjustable leg with insert and cap made of plastic, iron and zamak.

Thanks to the new design characterized by the addition of a ring at the base of the case back, when the latter is resting on the head of the screw does not come into contact with the plastic cap, improving the grip.

With a plastic cap well fixed on the screw there is no risk that, even during any movement of the furniture, it will unhook, ruining the furniture itself and the floor.

## PIEDINO CON FONDELLO E TAPPO

Ogni dettaglio, anche il più piccolo, può fare la differenza. Per questo motivo, abbiamo ridisegnato il Piedino con fondello e tappo realizzato in plastica, ferro e zama.

Grazie al nuovo design caratterizzato dall'aggiunta di un anello alla base del fondello, quando quest'ultimo va in appoggio sulla testa della vite non entra in contatto con il tappo in plastica, migliorandone il grip.

Con un tappo in plastica ben fissato sulla vite non c'è il rischio che, anche durante eventuali spostamenti del mobile, si sganci, rovinando il mobile stesso e il pavimento.



MORE THAN JUST COMPONENTS


# PR6820

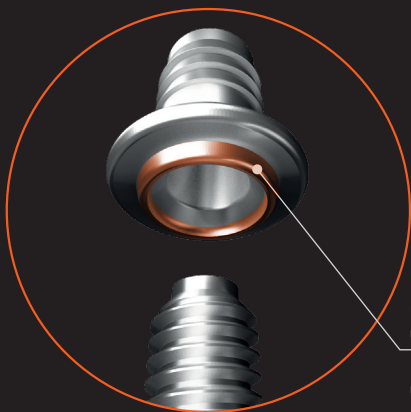
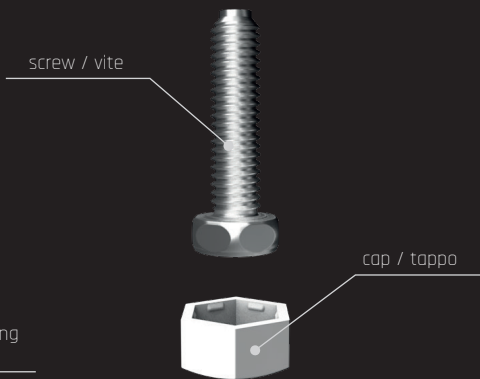
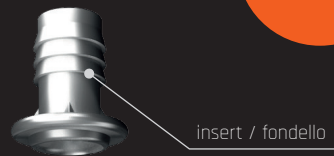
A ring that makes the difference

REGISTERED  
DESIGN

Technical details/Caratteristiche tecniche

ADJUSTABLE LEG WITH INSERT AND CAP  
PIEDINO CON FONDELLO E TAPPO

ART.	
PR6820	1250



Upgrade to the stop ring  
on the screw head.  
Miglioramento dell'anello  
di arresto sulla testa della vite.

Materials: PLASTIC/STEEL/ZAMAK  
Materiale: TECNOPLASTICA/FERRO/ZAMA

Height adjustable  
Regolabile in altezza



ledifit PR6820 - 11-2022 - ITEN

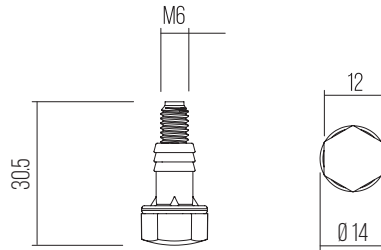
# PR6820

A ring that makes the difference

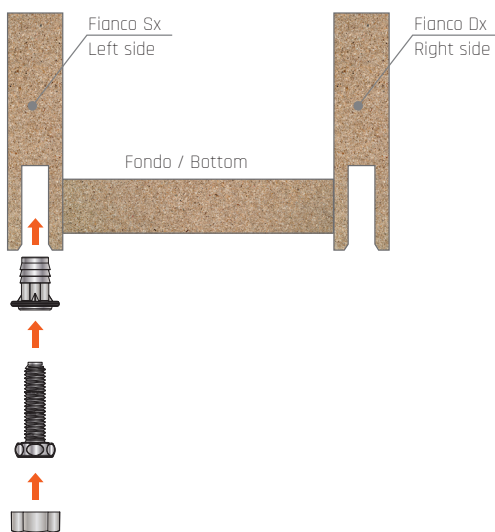
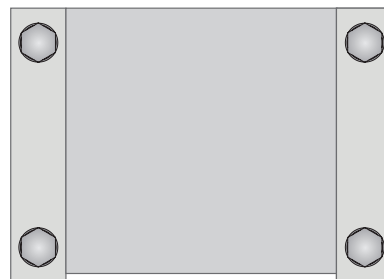
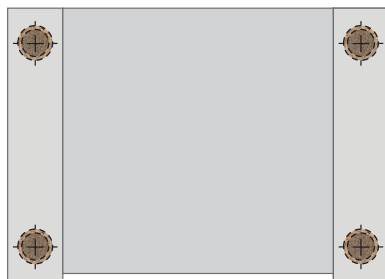
Technical details/Caratteristiche tecniche



ADJUSTABLE LEG WITH INSERT AND CAP  
PIEDINO CON FONDELLO E TAPPO



Assembling/Montaggio



Mod. PR6820 - 11-2012 - r124